



Electrolux
PROFESSIONAL

**Standard Preparation
600 mm Open Wall Cupboard**

ITEM # _____

MODEL # _____

NAME # _____

SIS # _____

AIA # _____



133254 (PA600LCN)

Open Wall Cupboard 600 mm

Short Form Specification

Item No. _____

Constructed in stainless steel. Back and bottom are made from a single bended stainless steel sheet for easier cleaning. Uprturned panel edges. Base shelf and height-adjustable intermediate shelf. Loading capacity: 80kg.

Construction

- Features an internal shelf which can be positioned at three different levels.
- Back and bottom panels composed of a single bended sheet for easier cleaning.

Optional Accessories

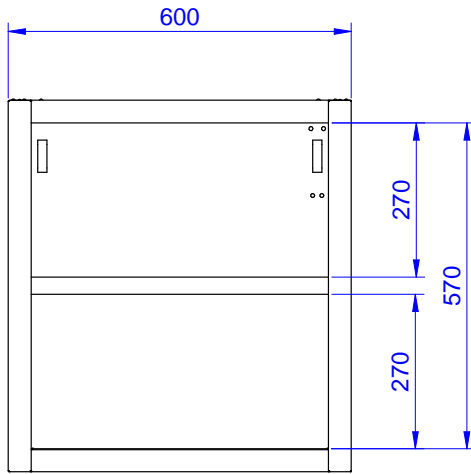
- Lighting kit with led for wall cupboards (1000mm and 1200mm) PNC 850709
- Lighting kit with led for wall cupboards (1400mm, 1600mm and 1800mm) PNC 850710

APPROVAL: _____

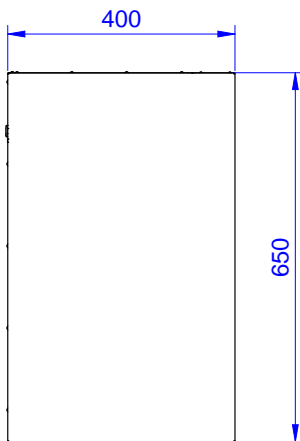


Experience the Excellence
www.electroluxprofessional.com

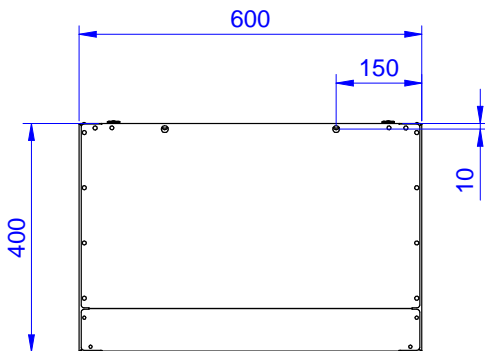
Front



Side



Top



Key Information:

External dimensions, Width:
133254 (PA600LCN) 600 mm

External dimensions, Depth: 400 mm

External dimensions, Height: 650 mm